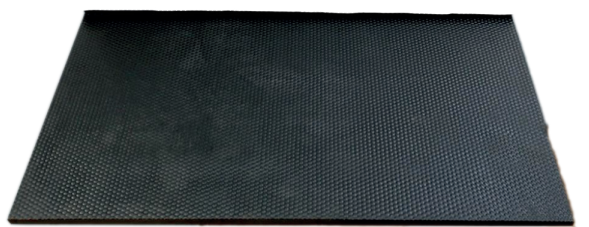


# CORE Stable Mat

The CORE Rubber Stable Mats provide a much drier environment for horse's hooves and help to prevent microbial activity which can be harmful to your horses/pets.



The advantages of using these mats is that they provide a soft and comfortable surface which is less likely to result in stress and panic injuries.

Furthermore, they are made from naturally insulating materials which are not only more comfortable but also healthier for your horses, especially during winter.



Wooden and concrete floors can be slippery when wet - the stable mat offers better traction for your horses.

Moreover, sterilising concrete and earth can be difficult, whereas the mats are far easier to keep clean, which reduces the risk of disease to your horses.



For any additional information or specification queries please give our technical team a call on freephone 0800 118 2278.







## TECHNICAL SPECIFICATION

<b>Material</b>	<b>Recycled Rubber</b>
<b>Mat Size</b>	<b>(1220 x 1830mm) 2.23m<sup>2</sup></b>
<b>Weight</b>	<b>25kg/36kg Per Mat</b>
<b>Lifespan</b>	<b>10+ years</b>
<b>Aperture Size</b>	<b>22mm</b>
<b>Depth of Mat</b>	<b>12mm or 18mm</b>
<b>Colour</b>	<b>Black</b>
<b>Joining Mechanism</b>	<b>Interlocking</b>
<b>Pallet Quantity</b>	<b>50 Mats</b>

## APPLICATIONS

- ☒ Playground Areas
- ☒ Grass Protection
- ☒ Non Slip Surfacing
- ☒ Equestrian Stables

## BENEFITS

- |  |   |  |
|--|---|--|
| <br><b>DDA COMPLIANT</b>       | <br><b>ECO-FRIENDLY</b>    | <br><b>LOW COST</b>     |
| <br><b>MULTI-USE</b>           | <br><b>EQUINE FRIENDLY</b> | <br><b>EASY INSTALL</b> |
| <br><b>ANTI-SLIP SURFACING</b> | <br><b>STRONG</b>          | <br><b>HYGIENIC</b>     |